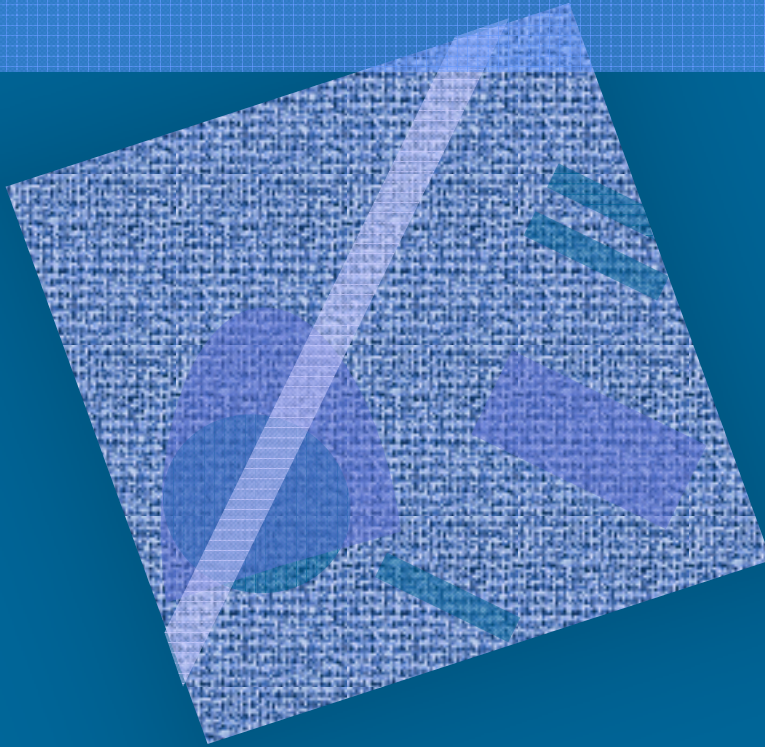


Elder Mediation - A Rising Tide



Judy McCann-Beranger

M.A., CCFE, Cert.CFM, Cert.EM

NL Network for the Prevention of Elder Abuse

St. John's January 28, 2014

Session Overview

- History of elder mediation
- Principles & philosophy
- Atlantic Canada research
- Ageism
- Unique characteristics
- Specialized training



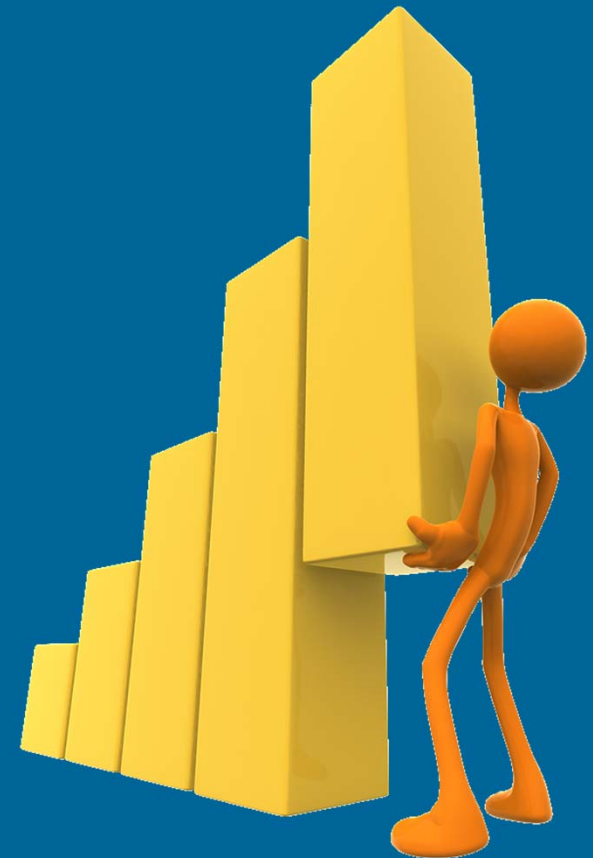
Elder Mediation Defined

Exploring the Role of Elder Mediation in the Prevention of Elder Abuse

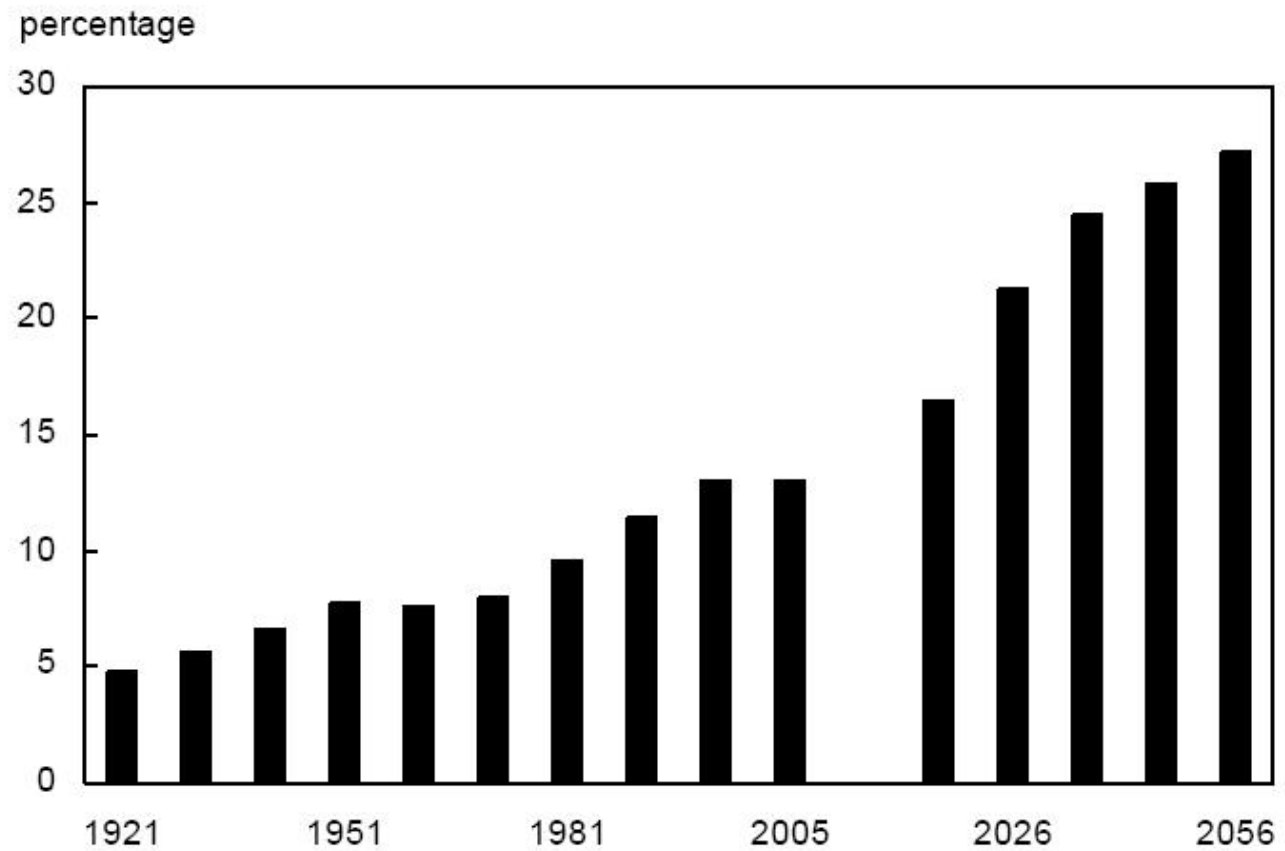
<http://www.justice.gc.ca/eng/rp-pr/cj-jp/fv-vf/mp-pm/index.html>

Statistics Speak to Us...

A Portrait of Seniors in Canada
– Statistics Canada (2006)

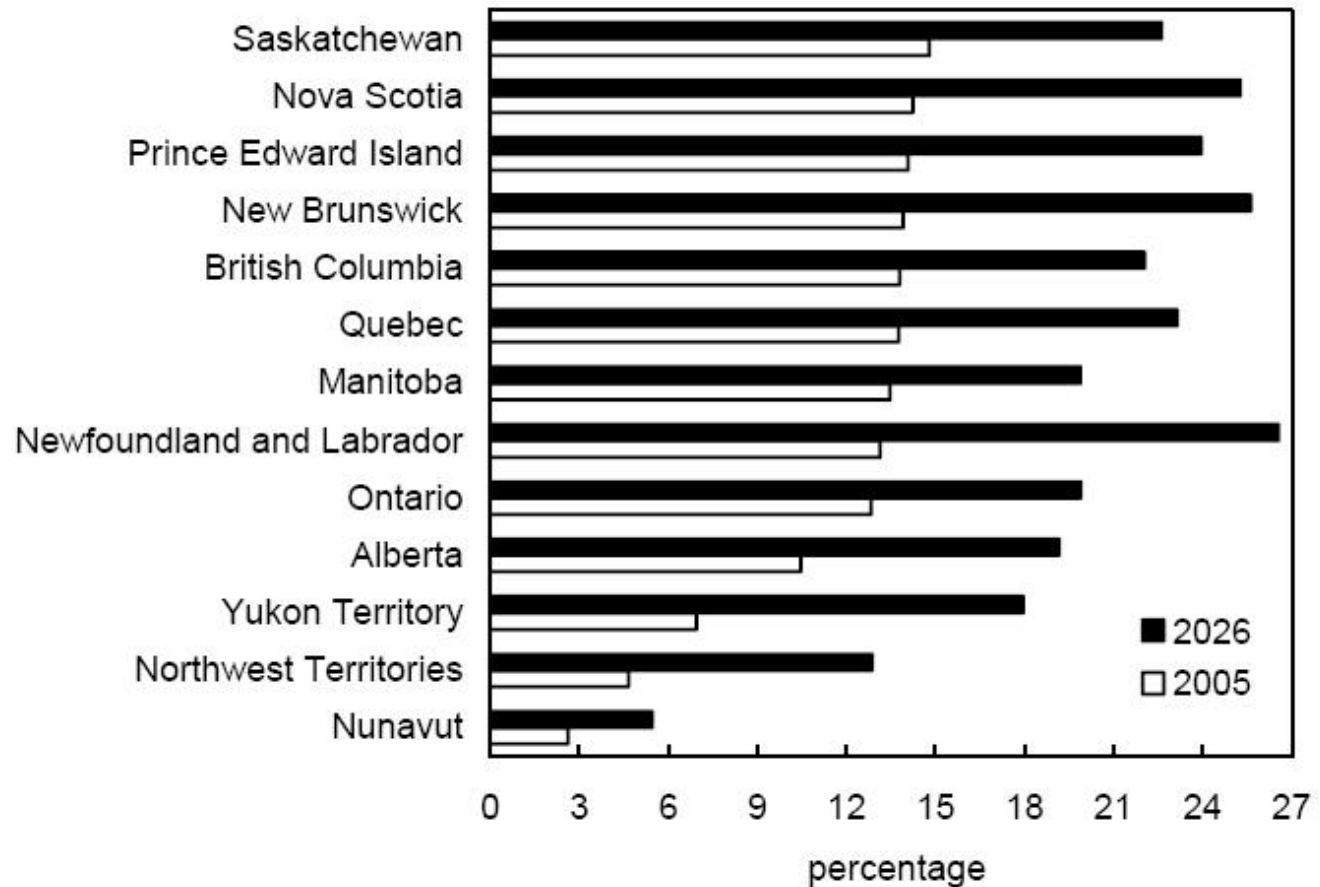


% of Canadian population comprised of persons aged 65+



Statistics Canada

% of Canadian population aged 65+ by province

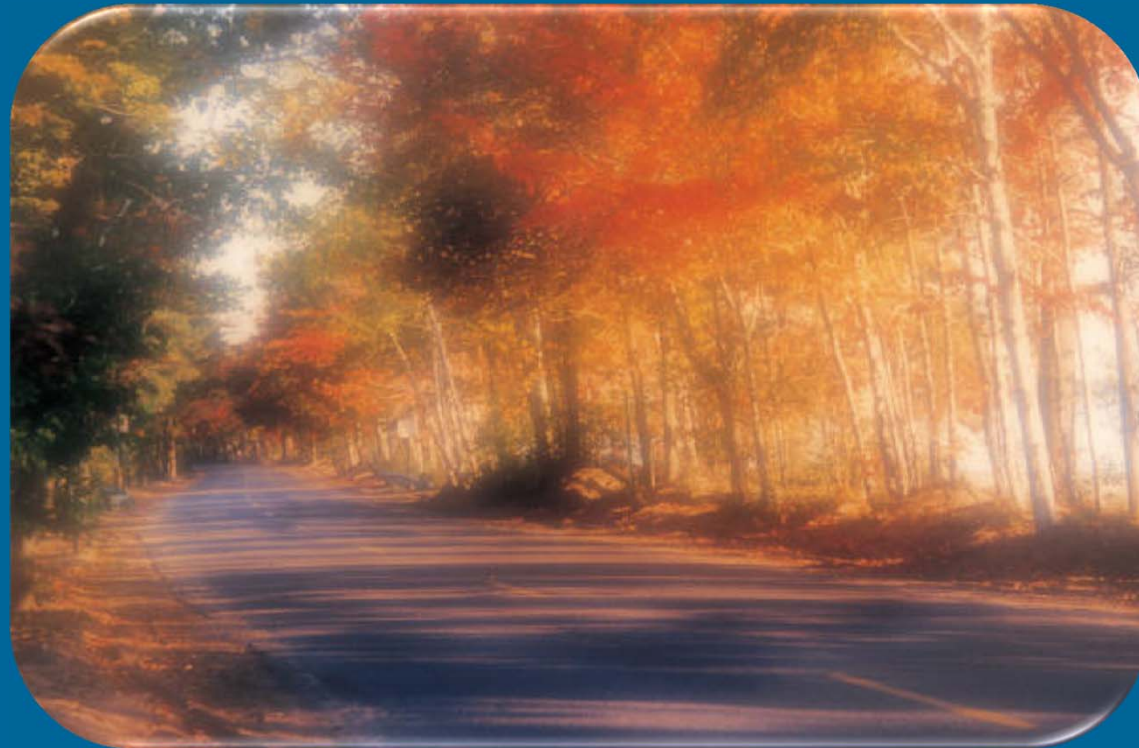


Statistical Trends

- Women live longer than men
- Health care improvements have led to increased life expectancy and longer survival
- Middle aged couples with 2 or more living parents has increased from 10% to 50%.



Our familial relationships are longer than ever before.



Person Centered

- Everyone has strengths, gifts, and contributions to offer.
- Every person has hopes, dreams and desires.
- Each person, and those who love the person, are the primary authorities on his or her life.
- Every person has the ability to express preferences and to make choices.
- A person's choices and preferences shall always be considered.

Core Values

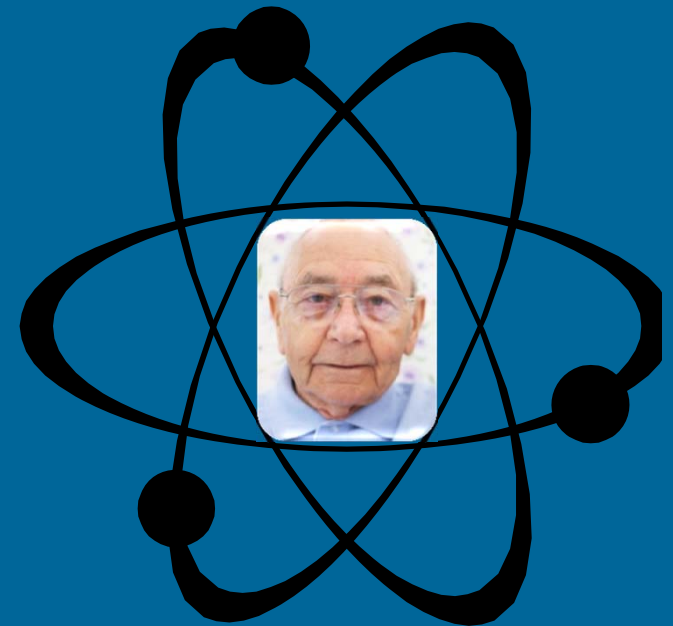
1. Dignity
2. Independence
3. Participation
4. Fairness
5. Security



“Canada – A Society for All Ages”

Person Centered

- Natural supports can help improve the person's quality of life by:
 - Maximizing independence
 - Creating community connections
 - Working toward achieving the person's dreams & goals
- Person-centered care is:
 - Listening
 - Trying things
 - Seeing how they work
 - Changing things as needed



Mediation & Older Adults

- Housing
- Safety
- Environment
- Managing care
- Care for the caregiver
- Intergenerational conflict
- New relationships
- Loss of dignity/voice
- Holiday schedules
- Abuse & neglect
- Religious issues
- Family business
- Financial issues
- End of life decisions
- Estate planning
- Guardianship
- Others...

Responding to Client Grief

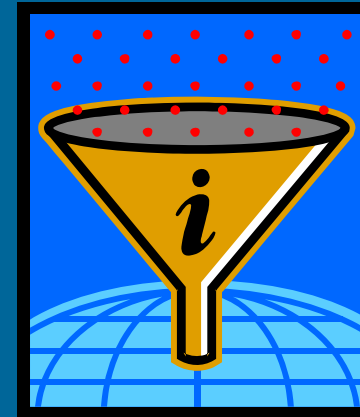
- Recognize the loss & continued losses
- Legitimize the feelings
- Normalize the experience
- Empower – focus on joint decision making
- Consider counselling referral



Initial Sessions...

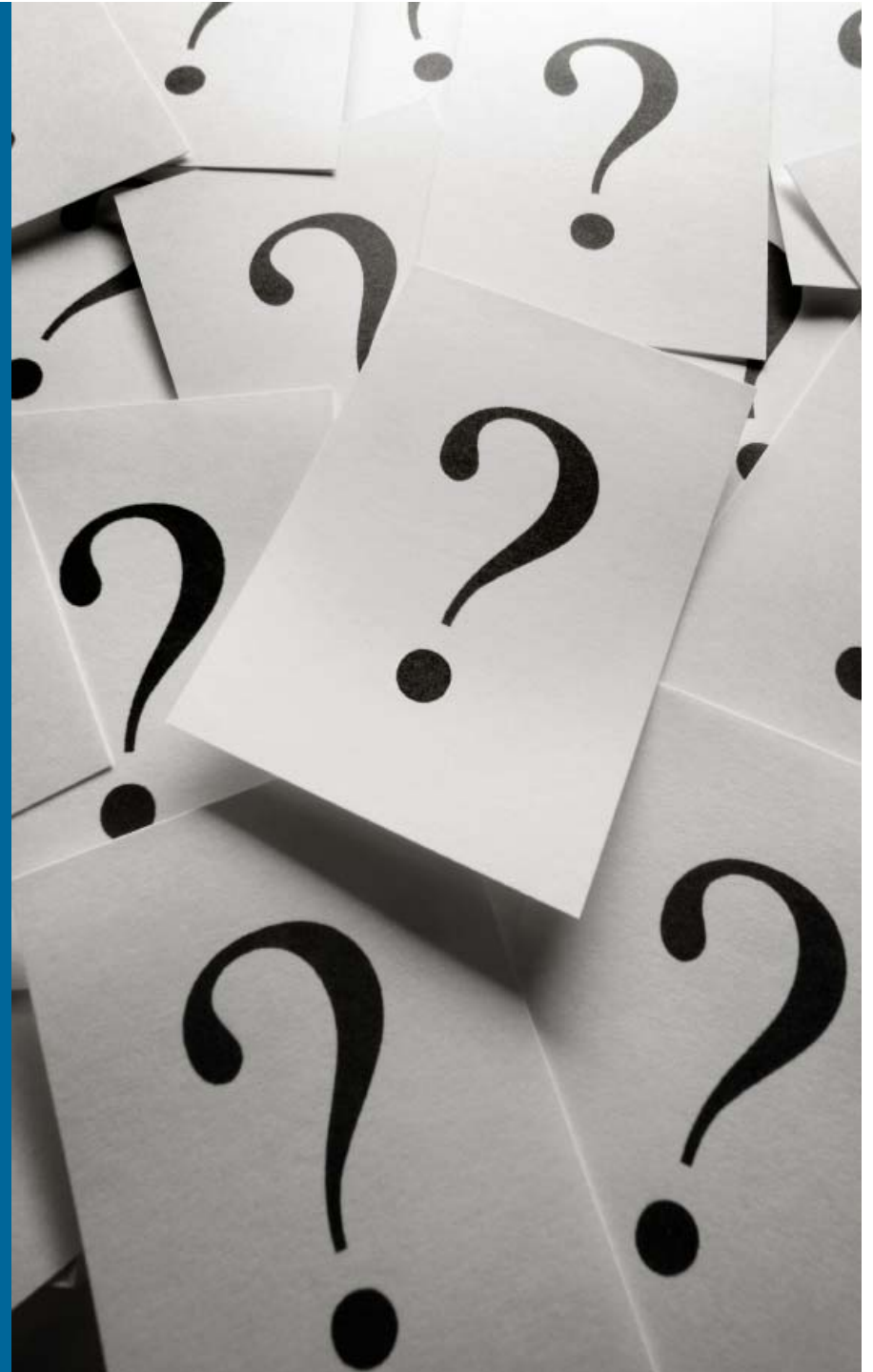


+



= A PLAN!

Who is
included
in the
decision-
making
process?



©Judy McCann-Beranger

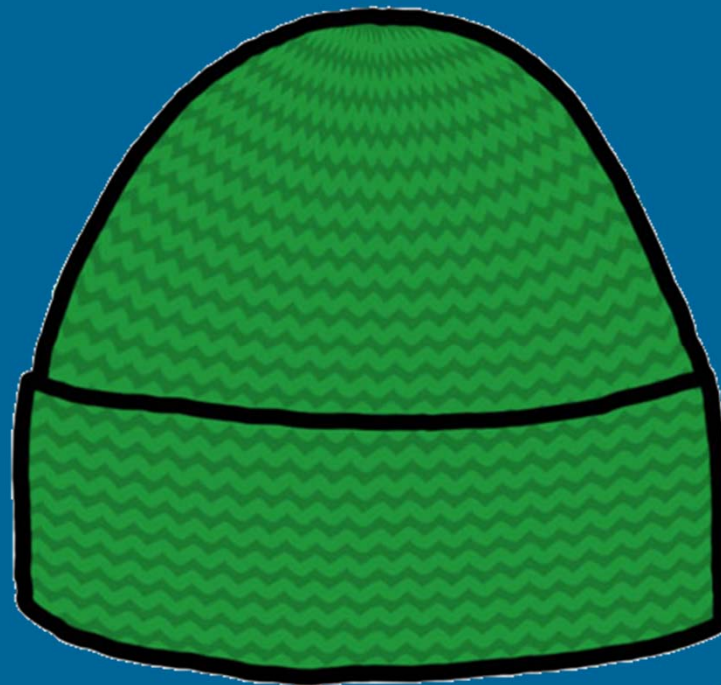
Pat Mutch

“A Courageous Story”



Anticipatory Planning

Get a hat...



before you need a hat.

Unique Characteristics

- Viable option yet rarely considered
- Especially effective – “wow” factor
- Openness to follow through on referrals
- Tendency towards larger # of participants
- Opportunities for **all** family members to participate (family of origin issues)
- Other

Specialized Training

- Dynamics of normal aging & family relationships
- AD & other progressive dementias
- Elder abuse
- Community support services
- Living arrangements
- Legal issues
- Culture & aging
- Grief Issues
- Guardianship
- Others...



Use of Language

Pat Mutch

“A Courageous Story”

*“It is tragic that so many of us go for so long without hearing about this wonderful service of mediation.
Why is that?”*